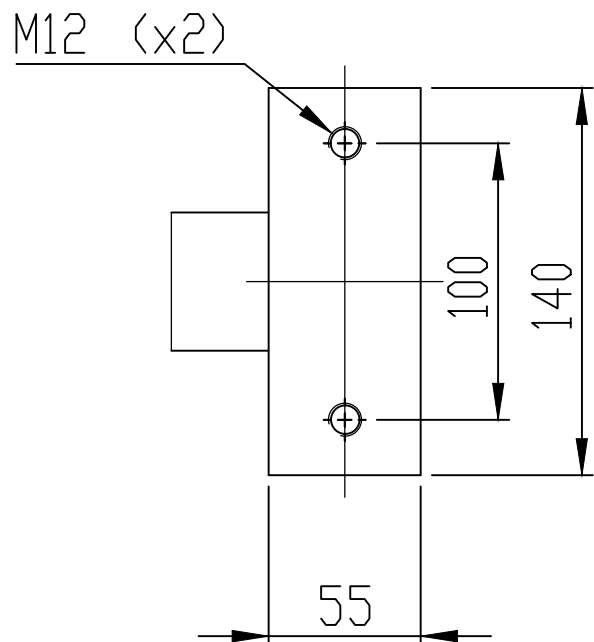
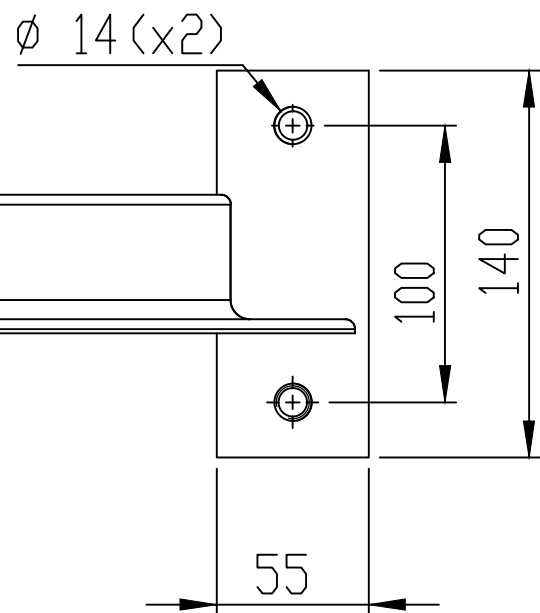
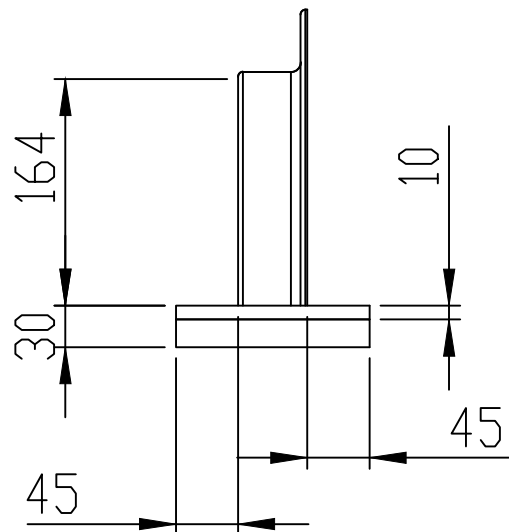


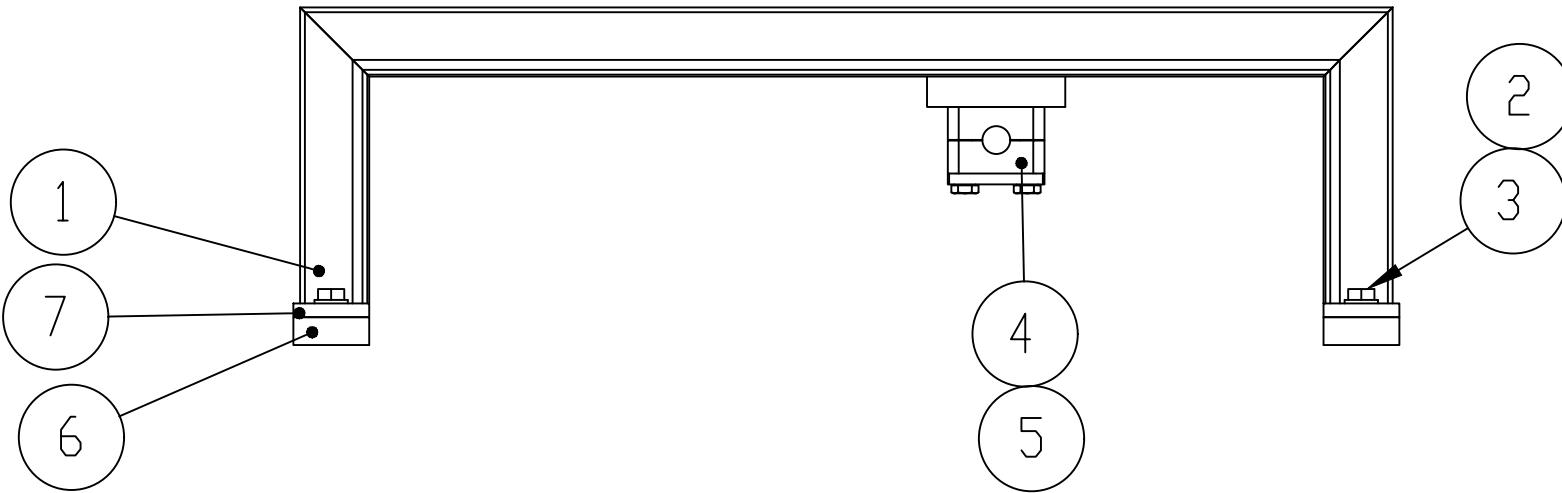
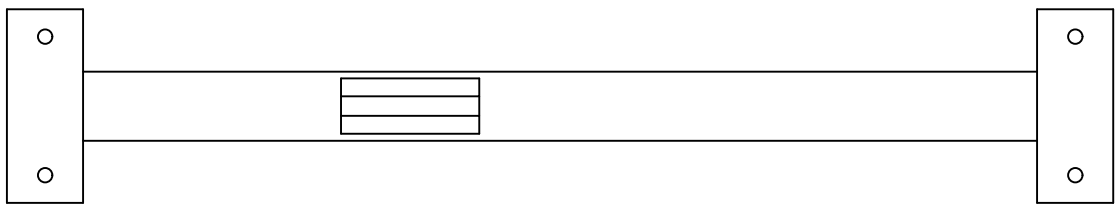
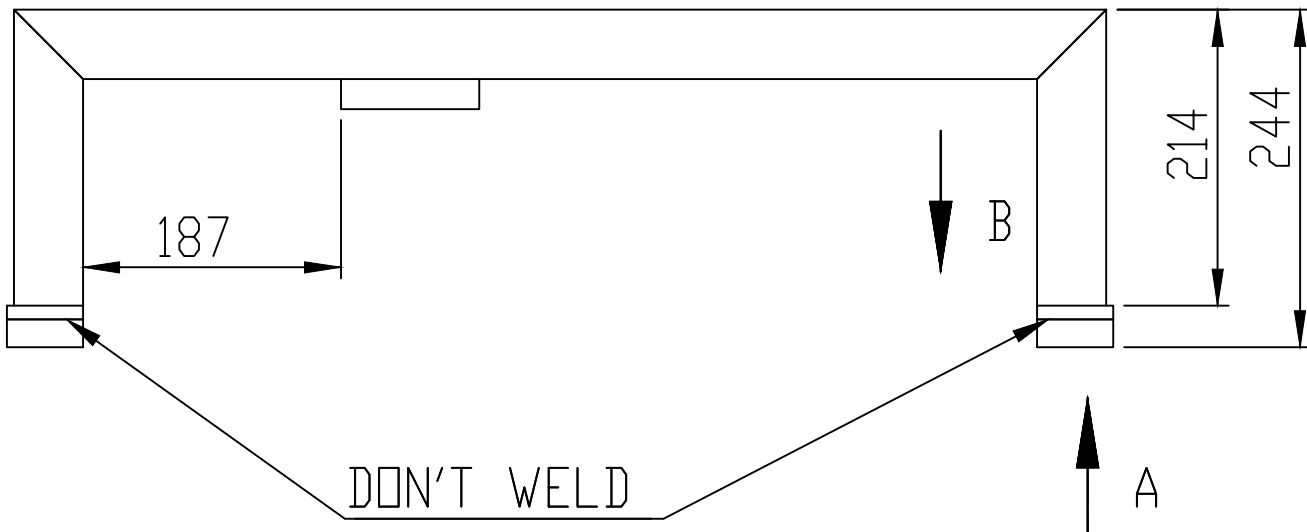
2558-3322-SPT-0XX (ANG 60X60 - 1UNDS)
2558-3323-SPT-0XX (ANG 60X60 - 1UNDS)
2558-3324-SPT-0XX (ANG 60X60 - 1UNDS)



VIEW A
ESCALE 1 : 4



VIEW B
ESCALE 1 : 4



Nº	Reference	Description	Material	QTY
1	ANGLE PROFILE 60x60x5 L=1218	ANGLE PROFILE 60x60x5 L=1218	S235JR	1
2	WASHER DIN 125 M12-St	WASHER	ACERD	6
3	HEXAGONAL SCREW DIN 933 M12 x 30 - 8.8	HEXAGONAL SCREW DIN 933 M12 x 30 - 8.8	8.8	4
4	CLAMP Ø20 HEAVY SERIE GROUP 3 ALDPALAS DIN 3015	CLAMP Ø20 HEAVY SERIE GROUP 3 ALDPALAS DIN 3015		1
5	RAIL 200 STSV LENGHT 100 WITH 2 DRILLS Ø 14 CS	RAIL 200 STSV LENGHT 100 WITH 2 DRILLS Ø 14 CS	S275JR	1
6	S235 JR L PLATE 55x140x20	S235 JR L PLATE 55x140x20	S235JR	2
7	S235 JR L PLATE 55x140x10	S235 JR L PLATE 55x140x10	S235JR	2

Rev.	Modification	Date	Name
------	--------------	------	------

This drawing is property of INSERTEC. Must not be copied or transferred to third parties in any way without written authorization.

Tolerance for dimensions without tol. according to ISO 2768-mK										Date	Name	Material
More than	0.5	3	6	30	120	400	1000	2000	Drawn	07/05/2025	IGK	Weight (kg)
Less	3	6	30	120	400	1000	2000	4000				
Machine Tool	±	±	±	±	±	±	±	±	Checked	07/05/2025	JCMH	
Welded	0.1	0.1	0.2	0.3	0.5	0.8	1.2	2	Verified	07/05/2025	BU	

Customer:									Format: 6	Title		
									A3			
									Scale: 1:8			

Project Methode:									Part Number			Revision
									Customer Number			Sheet 1/1

